

PROJECT APPROVED BY :

- PNB BANK
- BANK OF BARODA
- BANK OF INDIA
- AXIS BANK

Nagpur's Premium Duplex Scheme



P50500029106



“Luxury Villas”

By

GOLDEN HOMES

Your Dream, Our Passion...

ISOMETRIC VIEW



FIRST FLOOR



GROUND FLOOR

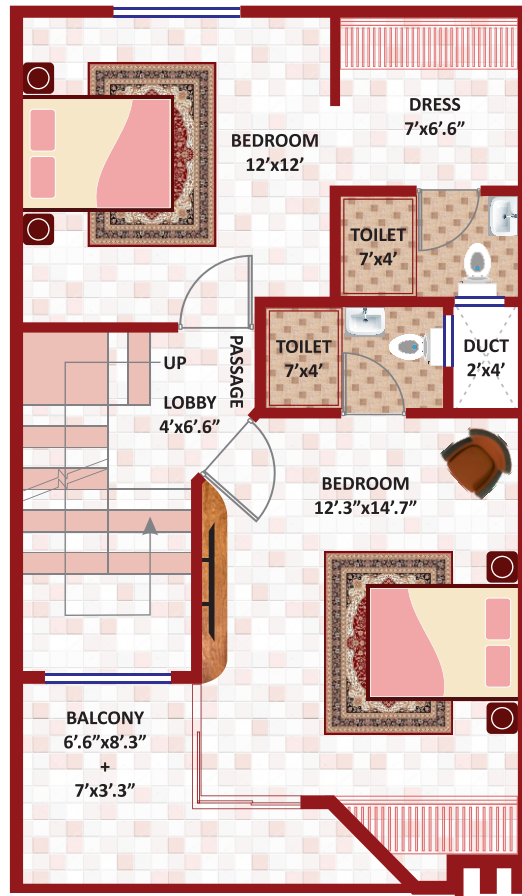
AERIAL VIEW ROW HOUSES





GROUND FLOOR

FIRST FLOOR PLAN
ROW HOUSE NO. 7 to 10, 13 to 21



ROW HOUSE NO

**SU. BUILT UP
AREA**

**ROW HOUSE NO.
7 TO 10, 13 TO 21**

1485 SQ. FT

ROW HOUSE NO. 27

1515 SQ. FT

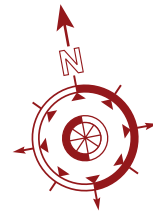
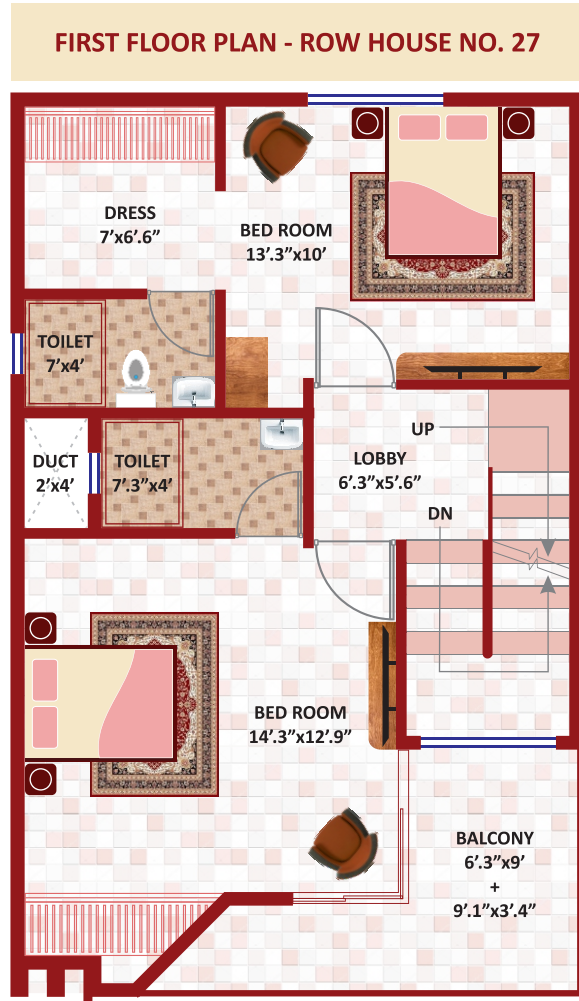
NEAREST DEVELOPMENT

SCHOOLS	KILOMETERS
PODAR INTERNATIONAL SCHOOL	3.0 KM
ROYAL GONDAWANA PUBLIC SCHOOL	1.0 KM
S.S. INTERNATIONAL SCHOOL	2.5 KM
BHAVAN'S SCHOOL	2.0 KM
NARAYANA VIDYALAYAM	1.5 KM
COLLEGES	
GOVERNMENT COLLEGE OF ENGINEERING KHAPRI	1.0 KM
JUPITER AYRUVED MEDICAL COLLEGE	JUST BEHIND
IIM NAGPUR	2.5 KM
HOSPITALS	
AIIMS NAGPUR	2.5 KM
CANCER HOSPITAL	4.0 KM
ARNEJA HEART HOSPITAL BESA	5.0 KM

OTHER	KILOMETERS
MIHAN GATE	2.0 KM
KHAPRI METRO STATION	1.5 KM
AJNI RAILWAY STATION	10 KM
INTERNATIONAL AIRPORT	6.0 KM
DMART BELTRODI	2.5 KM
POLICE STATION BELTRODI	2.5 KM
HOTEL LE MERAIDIEN	2.0 KM
NEAREST DESTINATION	
WARDHA ROAD	1.5 KM
OUTER RING ROAD	2.0 KM
MANISH NAGAR	4.0 KM
BESA SQUARE	5.0 KM



GROUND FLOOR



CONSTRUCTION WORK IN PROGRESS



AMENITIES



Grand Entry Gate



Temple



Solar Water Heater
With 5 Years Warranty



Video Door Phone



Garden



Jogging Track



Swimming Pool



Club House



Gym or Green Gym



Gazebo



Fountain



Open Play Area for Children



Chess



Carrom



Yoga and Meditation Area



Senior Citizen Sitting Area



Rain Water Harvesting



Wide Internal Road



Sewage Treatment Plant



Paved Pathway



Walkway



24*7 Water Supply



Compounded Society



CCTV



24*7 Security Guard

LOCATION MAP



SPECIFICATIONS

- **STRUCTURE** : Earthquake Resistance RCC Frame Structure.
- **KITCHEN** : Kitchen Granite Platform with Stainless Steel Sink, Designer Dado Tile Up to 2FT. above Kitchen Platform, Provision for Exhaust Fan, 800mm x 800mm Vitrified Tiles Flooring.
- **ELECTRIFICATION** : Concealed Copper Wiring with Circuit Breakers ISI Marked of with Modular Switches of Polycab / RR Cable or Equivalent Brand, Adequate Electrical Points Legrand, Wipro or Equivalent Brand, TV Point in Living Room & Master Bedroom, Aquaguard Point in Kitchen, Chimney Electric Point in Kitchen, Geyser Point in Bathrooms, Inverter Wiring, AC Points in all Bedrooms and Living Room, Wifi Cabling.
- **DOOR & WINDOWS** : Wooden Door Frame for Main door with Laminated Door, Powder Coated Aluminium Sliding Windows and Doors, Flush Door in Toilet RCC Frame, Flush Door with Wooden Frame for Bedrooms, Granite Window Sill, M S Safety and Balcony with Grill for Windows, **SMART MAIN DOOR LOCK.**
- **TOILET / BATHROOM** : Toilet/ Bathroom Sanitary Fittings of Jaguar or Equivalent Brand, CP fittings of Jaguar or Equivalent Brand, Anti-Skid Floor Tiles in Toilet, Toilet Wall Tiles Up to 7 FT. height, Hot and Cold Diverter with Overhead Shower.
- **INTERNAL FINISH** : 800mm x 800mm Vitrified Tiles Flooring, Anti-Skid Flooring in Terrace / Balcony, **LAMINATED WOODEN FLOORING FOR MASTER BEDROOM.**
- **PAINTING** : Inside Wall OBD Painting with Putty and External Paint with ACE SHILED.
- **RAILING** : S. S. Material in Staircase.
- **PLUMBING** : Plumbing Branded - ISI Marked.
- **WATERPROOFING** : Proper Waterproofing for Bathrooms, Utility Area and Terraces.

Scan For Location



GOLDEN REALTY INFRASTRUCTURES

Architect | Structural Engineer
Ar. Chandrashekhar Giripunje | Er. Nikhil Gangamwar

• OFFICE ADDRESS •

3rd Floor, Plot No 107, Vivekanand Nagar, Near Sai Mandir Chowk, Wardha Road, Nagpur - 440015.

• SITE ADDRESS •

Golden Homes, Near Shankarpur Panitanki, Opposite Dream Aawas, Shankarpur, Nagpur.

Email - sales@goldenhomes.org.in | **Contact - 7030040717, 7270056500**



Disclaimer : This Brochure is purely a conceptual presentation and not a legal offering. The developers reserve the right to alter and make any changes in the elevation, plans & specifications as deemed fit.